

Presenting...

7804 WESTFIELD DRIVE, BETHESDA, MD 20817

Landon Woods

The minute you step inside this beautiful home you will fall in love with the gorgeous hardwood floors, the open floor plan, the incredible granite and stainless Kitchen, the Master Bedroom Suite that features a sitting room with a fireplace, two walk-in closets, a large Master Bath and a 2 car garage!



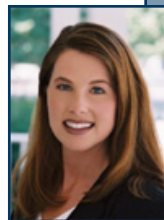
\$ 1,750,000

LISA STRANSKY BROWN

The personal and professional attention you deserve

202.368.6060 cell

Coldwell Banker Residential Brokerage
7272 Wisconsin Avenue
Bethesda, MD 20814
301.718.0010 office



**COLDWELL
BANKER**

RESIDENTIAL BROKERAGE

7804 WESTFIELD DRIVE, BETHESDA, MD 20817



Main Level

- Hardwood Floors
- Foyer entry
- Music Room
- Powder Room
- Dining Room
- Large Great Room with stone fireplace opens to deck
- Spacious Den opens to deck
- Huge Kitchen features granite and stainless

Upper Level One

- Wonderful Master Bedroom featuring a separate sitting room with a fireplace, 2 walk-in closets, and a large Master Bath.
- 2 spacious bedrooms with shared full bath
- Laundry Room

Upper Level Two

- Huge loft with spacious bedroom and full bath

Lower Level

- Recreation Room
- 2 Bedrooms
- Office
- Full Bath
- Storage Room
- Wine Closet

\$ 1,750,000

LISA STRANSKY BROWN

The personal and professional attention you deserve

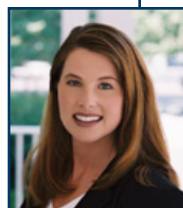
202.368.6060

Coldwell Banker Residential Brokerage

7272 Wisconsin Avenue

Bethesda, MD 20814

301.718.0010 office



Schools

Elementary - Burning Tree
Middle - Pyle
High School - Walt Whitman

Property Information

Lot/Block - 1/3
Year Built - 2004
Lot Size - 0.19 acre