



RESIDENCE

Welcome to this home that has it all! Location, charm, and room to grow. This brick Cape Cod is located on a quiet residential street; one block from a new grocery store, pharmacy, restaurants, and movie theater. Just a one-block walk to multiple bus lines for short rides to the Pentagon, State Department, DC and National Airport. A commuter dream with easy access to 395, Washington Boulevard, and GW Parkway. The gorgeous lot features mature landscaping, shade trees, and an expansive open space filled with options. This home has three finished levels hosting four bedrooms and three full bathrooms. A light-filled living room has a generous picture window, wood-burning fireplace with wood mantle, and access to the oversized screened porch. Both spaces are perfect for entertaining or relaxing. The dining room is trimmed with chair molding, a crystal chandelier, large windows, and easy access to the kitchen. The kitchen has a nice table space for casual eating, three windows, a door to the backyard porch, and a nice flow to the main level den. The top floor has two large bedrooms, each with walk-in closets and share a hall bathroom with bathtub. The hardwood floors throughout the main and upper levels add to the warmth and character of this beautiful home. The lower level is filled with daylight thanks to the windows and easy walkout access to the backyard. This level hosts a separate room, full bathroom, recreation area with built-in shelving, a washer and dryer plus storage space. The fantastic location, neighborhood amenities, and wonderful yard make this Arlington Cape Cod a "Do Not Miss"!

WashingtonFineProperties.com

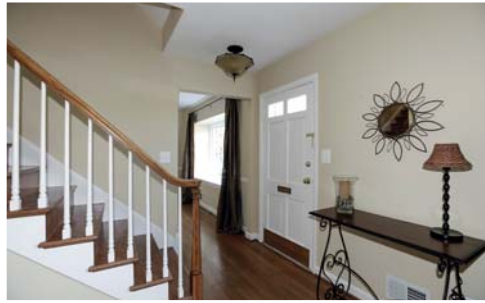
LISA STRANSKY BROWN, 202-368-6060

PENROSE
818 S. WAYNE STREET
ARLINGTON, VA 22204
OFFERED AT \$699,000





LIVING ROOM



FOYER



DINING ROOM



DEN/BEDROOM



KITCHEN



SUNNY EAT-IN KITCHEN



REAR VIEW OF HOME AND YARD



SCREEN PORCH



EXPANSIVE BACKYARD

FEATURES & AMENITIES

MAIN LEVEL

- Foyer with center hall stairwell
- 2 Bedrooms, 1 Full Bathroom
- Main level bedrooms also useful for office, den or extra living areas
- Living room with fireplace and wood mantle
- Dining Room with Chair molding and chandelier
- Kitchen with three windows, eat in table space, and exterior door to wooden porch
- Oversized screen porch
- Hardwood flooring

UPPER LEVEL

- 2 large bedrooms with ceiling fans, walk-in closets and dormer windows
- Hall linen closet
- Full bathroom with bathtub
- Attic access
- Hardwood flooring

LOWER LEVEL

- Open recreation room with neutral carpeting and built-in wood shelving
- Separate room with window, closet and door - perfect for lower level office!
- Full size washer and dryer
- Storage space
- Rear exterior door for walk out to backyard

EXTERIOR

- Tremendous open yard space
- Driveway - can easily accommodate three cars for off street parking
- Storage space below wooden porch
- Enjoy the outdoors from the rear wooden porch or oversized screen porch

MISCELLANEOUS

- Year Built: 1953
- Taxes: \$5373
- Neighborhood: Arlington Heights/Penrose

SCHOOLS

- Patrick Henry ES
 - Thomas Jefferson MS
 - Wakefield HS
- *per Arlington County, VA website*

LISA STRANSKY BROWN

Cell 202-368-6060
 Lisa.StranskyBrown@wfp.com



This material is based upon information which we consider reliable, but because it has been provided by third parties, we cannot represent that it is accurate or complete, and it should not be relied upon as such. This offering is subject to errors, omissions, changes, including price, or withdrawal without notice. © 2012 HomeVisit

WashingtonFineProperties.com

WASHINGTON, D.C.
 202.944.5000

GEORGETOWN/DOWNTOWN
 202.333.3320

MARYLAND
 301.983.6400

VIRGINIA
 703.317.7000

MIDDLEBURG/VA COUNTRYSIDE
 540.687.6395

