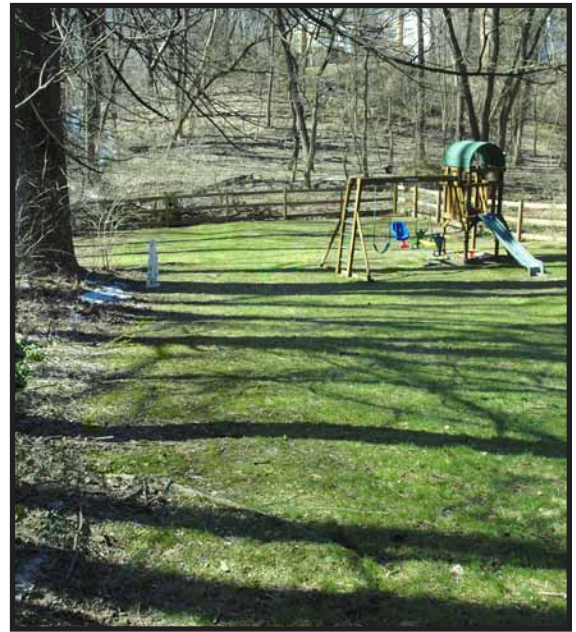
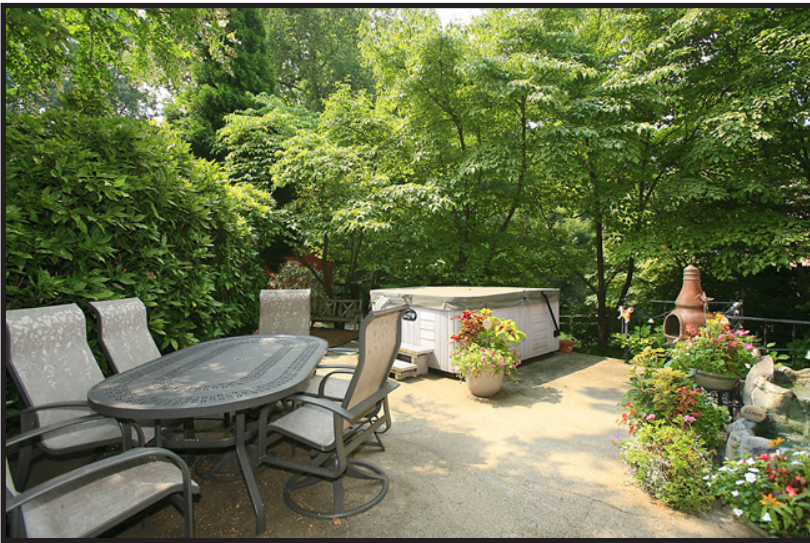


8700 BRIERLY COURT • CHEVY CHASE, MD

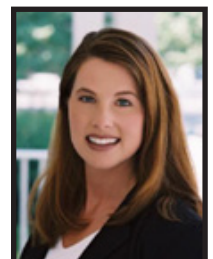


Cul-de-sac living on a half acre in Chevy Chase!

TAXES: \$8,193

LISA STRANSKY BROWN

WWW.REALESTATELISA.COM



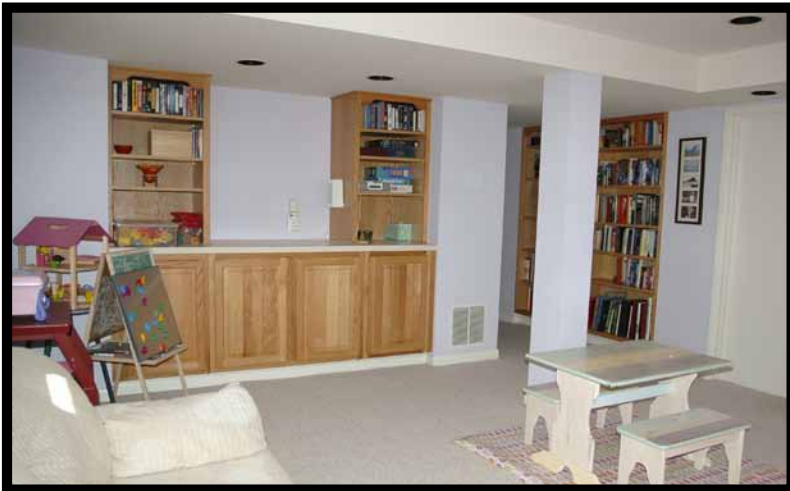
the personal and professional attention you deserve



Coldwell Banker Residential Brokerage • 7272 Wisconsin Avenue • Bethesda, MD 20814 • 301.718.0010 office • 202.368.6060 cell

8700 BRIERLY COURT • CHEVY CHASE, MD

- 4 bedrooms, 3 Full Baths plus a Study
- Fireplace, Hardwood Floors, Crown Molding
- Newly Renovated Eco-Friendly Kitchen
- Energy Efficient Pella Windows new in 2005
- Amazing ½ Acre Fenced Yard
- Flagstone Walk, Back Patio with Hot Tub
- Adjacent to Capital Crescent Trail
- Multi-Car Driveway
- Large Finished Basement with Loads of Extra Storage
- Playground Equipment & 2 Storage Sheds



This spacious and exquisitely maintained Cape Cod has it all – inside and out! The front faces a quiet cul-de-sac and the back yard is an incredible half acre that is fully fenced -- a private paradise only 2½ miles north of D.C. The well-appointed interior features three modern full baths and a downstairs playroom/media room with beautiful built-ins. Recently renovated ecofriendly kitchen includes FSC-Certified, formaldehyde-free maple cabinets, Silestone with recycled-glass counters, glass & ceramic backsplash and new Energy Star-rated Stainless appliances. Energy efficient windows top to bottom. Nothing to do here but move in and enjoy!

LISA STRANSKY BROWN
COLDWELL BANKER RESIDENTIAL BROKERAGE

