



RESIDENCE

Welcome to this great Westwood Gardens condo! This two bedroom, two full bath home provides all the conveniences and living space you need. Enter onto an elevated landing leading to the open floor plan, beautiful hardwood floors, and light filled windows. The spacious living room features sliding glass doors opening to the large deck overlooking the manicured landscaping and neighborhood pool. The kitchen is complete with stainless steel appliances, granite countertops, decorator tile backsplash, and a breakfast bar. It adjoins the dining room with a large window, providing wonderful natural light, overlooking the courtyard. A couple steps up lead to the two bedrooms and two full bathrooms. The master bedroom hosts its own private bathroom and ample closet space with two double door closets. The second bedroom is ample in size and offers a large walk in closet. A convenient stackable washer and dryer tucks away within one of the hall closets. Enjoy access to both the pool and fitness center in this wonderful condo community conveniently located near Wheaton Metro and Westfield Shoppingtown!

WashingtonFineProperties.com

LISA STRANSKY BROWN, 202-368-6060

WESTWOOD GARDENS
10855 AMHERST AVENUE 101
SILVER SPRING, MARYLAND





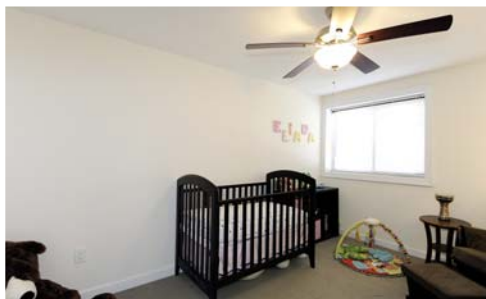
KITCHEN



DINING ROOM



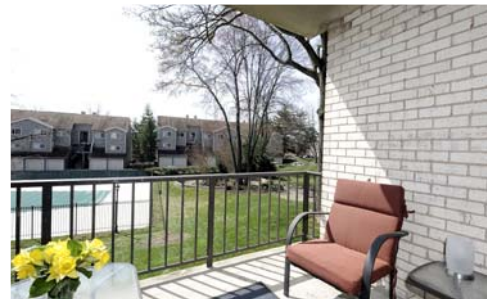
BEDROOM



BEDROOM #2



COURTYARD



DECK

FEATURES & AMENITIES

- 2 Bedrooms
- 2 Full Baths
- Hardwood Flooring
- Kitchen with Stainless steel appliances, granite countertops, and tile backsplash
- Breakfast bar with granite open to kitchen
- Large walk-in closet
- Stackable washer/dryer
- Sliding glass doors to large deck overlooking courtyard with pool
- Secure building
- Convenient parking

- 3 foot by 6 foot storage space
- Access to community pool and fitness center
- Condo Fee: \$286/month
- Annual taxes: \$2,952/year

For additional information, please contact the listing agent:

LISA STRANSKY BROWN
 Cell 202-368-6060
 Lisa.StranskyBrown@wfp.com



This material is based upon information which we consider reliable, but because it has been provided by third parties, we cannot represent that it is accurate or complete, and it should not be relied upon as such. This offering is subject to errors, omissions, changes, including price, or withdrawal without notice.

© 2013 HomeVisit

WashingtonFineProperties.com

WASHINGTON, D.C.
202.944.5000

GEORGETOWN/DOWNTOWN
202.333.3320

MARYLAND
301.983.6400

VIRGINIA
703.317.7000

MIDDLEBURG/VA COUNTRYSIDE
540.687.6395

