



RESIDENCE

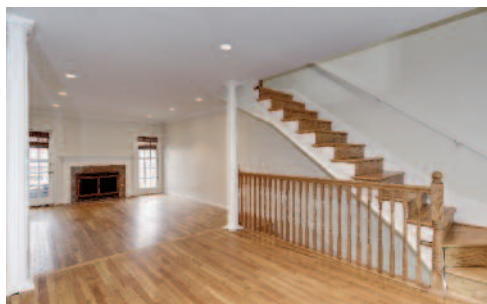
Situated in the heart of Capitol Hill, 335 11th Street SE is ideally located just a short walk to the restaurants and stores of Barracks Row and Eastern Market Metro. On three finished levels, this charming three-bedroom brick row house offers a perfect floor plan with wonderful living spaces. The main level features the updated kitchen with two-light filled windows and island with space for seating, a dining room, and a large living room with fireplace. The main level walks out to a great deck over the private fenced backyard, perfect for entertaining. The upper level of the home has two large bedrooms and a centrally located bathroom with skylight. On the lower level, a recreation room or a great space for an office, offers an abundance of storage with a wall of custom built-in shelving and many closets. Also on this level is the washer and dryer, the third bedroom with a fireplace and door leading to the backyard, and a full bathroom. In such an exceptional location, providing easy commuting and access to all DC has to offer, this home is one not to be missed!

WFP.com

LISA STRANSKY BROWN, 202-368-6060

CAPITOL HILL
335 11TH STREET SE
WASHINGTON, DC 20003





FEATURES

- 3 large bedrooms
- 2 full bathrooms, 1 half bath on main level
- 3 finished levels
- Hardwood flooring
- Separate dining Room
- Large living Room
- 2 Fireplaces
- Great back deck
- Private fenced yard
- Walk-out fully finished lower level
- Washer and Dryer
- Great Capitol Hill Location!
- Less than 3 blocks to Eastern Market Metro

For additional information, please contact the listing agent:

LISA STRANSKY BROWN

Direct 202-368-6060

Lisa.StranskyBrown@wfp.com



This material is based upon information which we consider reliable, but because it has been provided by third parties, we cannot represent that it is accurate or complete, and it should not be relied upon as such. This offering is subject to errors, omissions, changes, including price, or withdrawal without notice. © 2015 HomeVisit

WFP.com

WASHINGTON
DISTRICT OF COLUMBIA
202.944.5000

GEORGETOWN/
DOWNTOWN
202.333.3320

POTOMAC
MARYLAND
301.983.6400

BETHESDA
MARYLAND
301.222.0050

NORTHERN
VIRGINIA
703.317.7000

MIDDLEBURG/
VA COUNTRYSIDE
540.687.6395

